

GEO-MEASURE Setup Guide

This guide explains how to set up and operate the GEO-MEASURE device with the official mobile application. It covers device operation, GNSS and RTK status, measurement workflows, and mounting requirements.

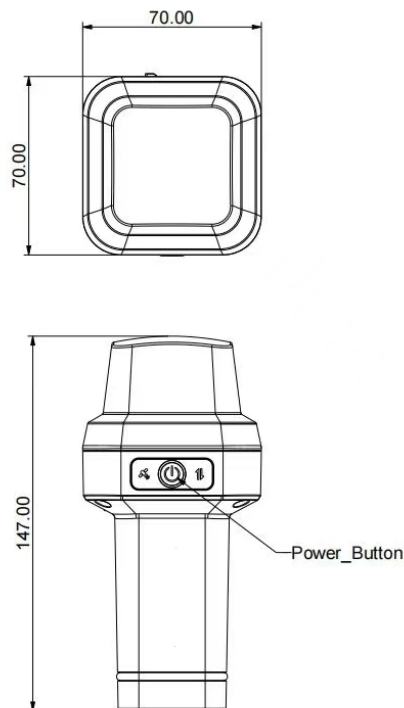
Hardware Setup

Powering On the Device:

- Press and hold the Power Button for 3 seconds.
- The indicator light will turn on.
- A confirmation beep will sound.

Thread Information:

- The GEO-MEASURE device uses a 5/8 x 11-inch threaded mount compatible with standard survey poles.
- A survey pole is not included and must be supplied by the user.

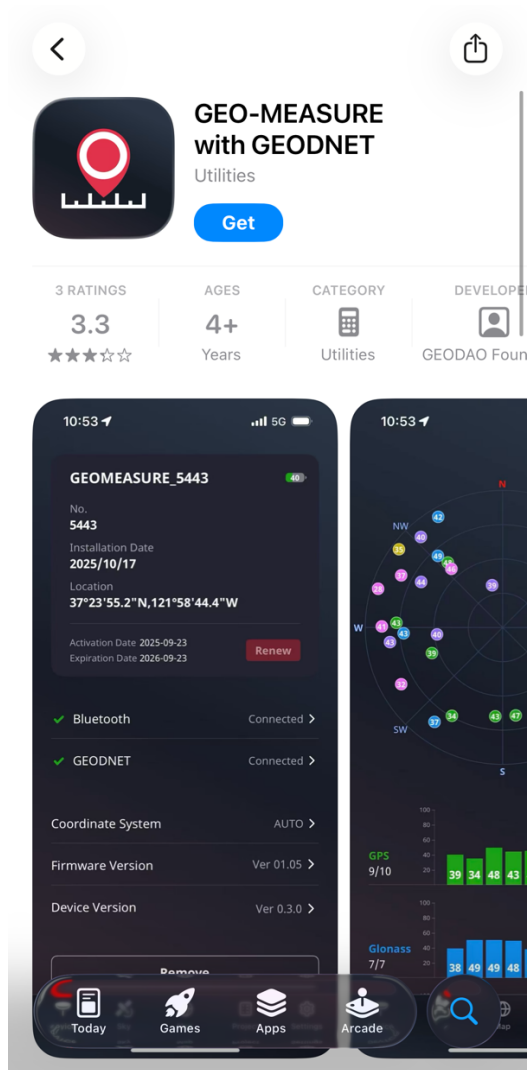


Mobile Device Setup

The GEO-MEASURE mobile app is available for iOS



- Download the GEO-MEASURE App from the App Store.

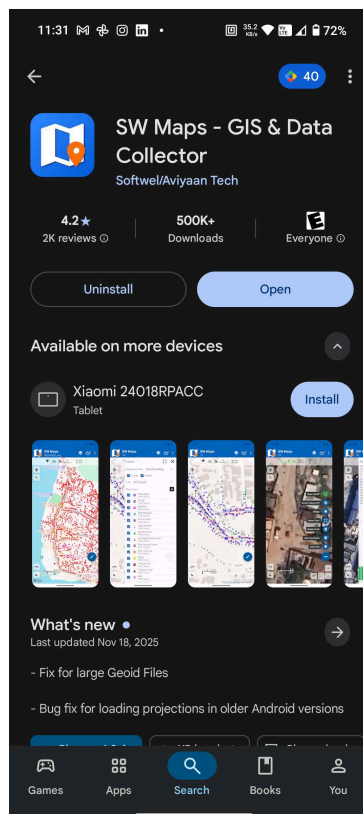


- Ensure Bluetooth and internet are enabled.
- Open the GEO-MEASURE App. It will automatically navigate to the Add New Device page.



- Android users:

The Android version of the GEO-MEASURE app is coming soon. In the meantime, Android users can use the SW Maps app. For assistance with setup and RTK account credentials, please contact support@geodnet.com

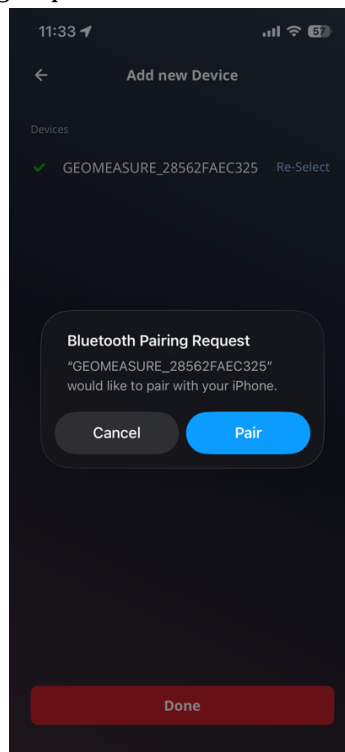


Connecting GEO-MEASURE

- Ensure the device is powered on.
- On the Add New Device page, select your device.



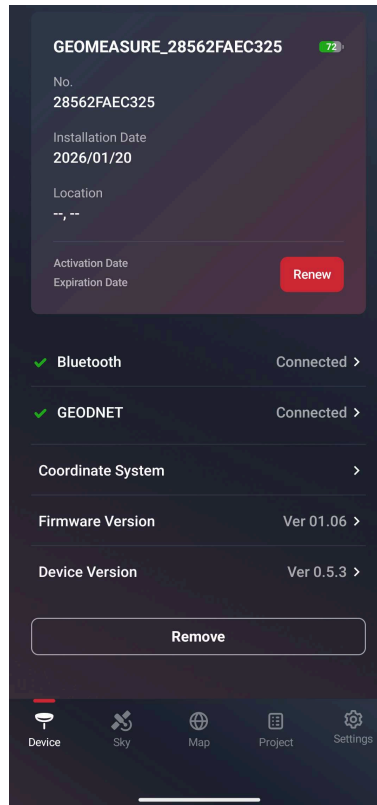
- Confirm the Bluetooth pairing request.



- Once connected, the app will switch to the Device Page.

You should see:

- Bluetooth → Connected
- GEODNET → Connected (if not, verify your mobile data or Wi-Fi connection).



GEO-MEASURE App Overview

The app includes the following main tabs:

- Device – Displays device information and status
- Sky – Shows satellite signals received
- Map – Primary workspace for measurement
- Project – Manage and export projects
- Settings – App version and configuration

Performing Basic Measurements

1. Check RTK Mode

- Verify RTK status on the Map page (top-left).

2. Create a New Project

- Tap the New Project button (top right).
- Enter a username/description and project name.
- Select preferred units and save.

3. Start Measurement

- Tap the Ruler icon to enter measurement mode.

- Tap Go to begin recording; tap Stop to finish.

4. Export Data

- Open the Project tab and select your project.
- Choose a file format (CSV, TXT, etc.).
- Export via email, messaging, or file sharing.

Tips for Use

- Use the device in open-sky environments for best GNSS performance.
- Verify RTK Fix before recording measurements.
- Keep the GEO-MEASURE app updated.

Troubleshooting

- Device not found → Ensure device is powered on and in Bluetooth range.
- GEODNET not connected → Check internet connection.
- App freezing → Restart the app and check for updates.
- No RTK connection → Ensure you're outdoors; structures may block satellite signals.

Note: The bundled RTK service is exclusively available for use with the GEO-MEASURE application and is not compatible with other apps