



Front View



Side View

## vue UHD PTZ

The vue UHD PTZ boosts HDMI/RTSP output resolution to 4K@60Hz. It supports real-time AI tracking of faces/figures/zones and incorporate a new USB 3.0 output port to meet growing demands for remote conferencing and live streaming applications.

Notably, the NDI version has been upgraded from NDI|HX to NDI|HX2, delivering enhanced video quality and lower latency for network streaming - addressing professional users' pursuit of superior performance. The front panel features an OLED screen displaying real-time resolution and IP information for better camera management.

Like its vue 4K sibling which boasts a unique 360°-visible TALLY indicator and identification board (immune to device switching interference), the innovative RGBlink vue camera design with patented technology adapts seamlessly to any environment. It utilizes cutting-edge UHD CMOS sensors with AI processing chips for exceptional performance.

### Key Features

- Ultra HD image with 1/2.8-inch 8.42MP sensor, 3840x2160 at 60fps
- 12X/20X/30X optical zoom lenses available
- Advanced autofocus for fast, accurate, and stable focusing
- Low-noise CMOS with 2D/3D noise reduction for high SNR and clarity
- HDMI/SDI/USB/LAN (PoE+ optional) outputs, SDI supports 1080P60 at 100m
- H.265/H.264 video and AAC/G.711A audio compression up to 4K@60fps
- AAC audio input (16k-48kHz) and G.711A (8kHz) support
- ONVIF/RTSP/RTMP protocols with RTMP push and VISCA control
- AI tracking with face/human recognition for classrooms and meetings
- RS485/RS232 control (RS232 supports cascading)
- VISCA/PELCO-D/P protocols with auto-detection
- Silent gimbal with precision stepper motor for smooth, quiet operation
- Low-power sleep mode under 400mW
- 255 presets (10 accessible via remote)
- Infrared remote controller (anti-interference, signal passthrough)
- Ideal for education, conferences, medical, court, and command systems

### Specification

|                   |   |   |  |   |
|-------------------|---|---|--|---|
| Connectors        | Video   | HDMI, 3G-SDI, LAN (PoE+), USB3.0  |  |   |
|                   | Control   | RS-232  | Loop-through RS232 output  |   |
|                   |   | RS-485  |  |   |
|                   | Audio input   | Line-in   | Dual-channel 3.5mm audio jack  |   |
|                   | Audio output  | HDMI, 3G-SDI, LAN (PoE+), USB3.0  |  |   |
|                   | LAN   | 1000M Ethernet port with POE+ power supply, supports audio/video output and IP VISCA control protocol |  |   |
| Standard          | Image bitstream   | Dual stream output capability   |  |   |
|                   | Video compression format                                  | LAN   | H.264/H.265  |   |
|                   |   | USB 3.0   | MJPG/H.264/H.265/YUY2/NV12   |   |
|                   | Control protocol  | VISCA/Pelco-D/Pelco-P   |  |   |
|                   |   | Baud rate: 115200/9600/4800/2400bps   |  |   |
|                   | Audio compression format                                  | AAC, G.711A   |  |   |
|                   | Network protocol  | Support RTSP, RTMP, ONVIF, SRT, NDI (optional); Network VISCA control protocol supported              |  |   |
|                   |   | Remote firmware upgrade, reboot and reset supported   |  |   |
| USB communication | UVC (USB Video Class) and UAC (USB Audio Class) compliant |   |  |   |
| Len Parameters    | Image sensor  | 1/2.8-inch high-quality CMOS sensor   |  |   |
|                   | Effective pixels  | 8.42 megapixels, 16:9 aspect ratio  |  |   |
|                   | Video signal format and resolution                        | HDMI  | 3840 × 2160P@60/59.94/50/30/29.97/25   1920 × 1080P@60/59.94/50/30/29.97/25   1280 × 720P@60/59.94/50  |   |
|                   |   | SDI   | 1920 × 1080P@60/59.94/50/30/29.97/25   1920 × 1080P@60/50/59.94   1280 × 720P@60/59.94/50  |   |
|                   |   | USB   | <b>YUY2/NV12:</b><br>1920 × 1080   1280 × 720   1024 × 576   800 × 600   800 × 448   640 × 480   640 × 360   480 × 270<br>320 × 180P@30/25/20/15/10/5fps   |   |
|                   |   |   | <b>H264/H265/MJPG:</b><br>3840 × 2160   1920 × 1080   1600 × 896   1280 × 720   1024 × 576   960 × 540   800 × 600   800 × 448   720 × 576<br>720 × 480   640 × 480   640 × 360   480 × 270   352 × 288   320 × 240@60/30/25/20/15/10/5fps |   |
|                   |   |   | LAN  | <b>H264/H265:</b><br>Main Code Stream<br>3840 × 2160   2592 × 1944   2304 × 1296 @60/30/25/20/15/10/5fps<br>1920 × 1080   1280 × 720@60/30/25/20/15/10/5fps<br>Subcode Stream<br>1920 × 1080   1280 × 720   640 × 360   640 × 480   320 × 240   320 × 180@30/25/20/15/10/5fps |

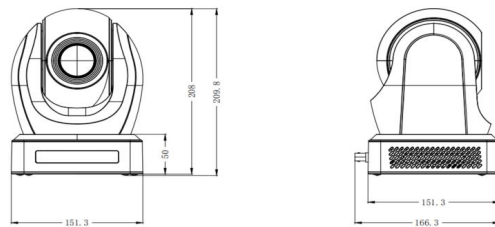


|                     |                         |   |              |                 |
|---------------------|-------------------------|---|--------------|-----------------|
| Len Parameters      | Optical Zoom            | 12x   | 20x          | 30x             |
|                     | Digital Zoom            | 16x   | 16x          | 16x             |
|                     | EFL (f)                 | f = 4.1 ~ 49.2mm  | f=4.8 ~ 96mm | f=5.2 ~ 148.4mm |
|                     | H FOV°                  | 70.4°~6.72°   | 60.04°~3.81° | 58.1°~2.14°     |
|                     | F-Number (F/No.)        | F1.8 ~ F2.68  | F1.8 ~ F2.9  | F1.3 ~ F4.8     |
|                     | Minimum Illumination    | 0.5Lux(F1.8, AGC ON)  |              |                 |
|                     | Digital Noise Reduction | 2D & 3D digital noise reduction   |              |                 |
|                     | White Balance           | Auto/manual/one-click white balance/specified color temperature (2400K-7100K, 100K step)                    |              |                 |
|                     | Focus                   | Auto/manual/one-press focus   |              |                 |
|                     | Iris                    | Auto/manual   |              |                 |
|                     | Electronic Shutter      | Auto/manual   |              |                 |
|                     | Backlight Compensation  | On/off  |              |                 |
|                     | Wide Dynamic Range      | Off/dynamic level adjustment  |              |                 |
|                     | Video Adjustment        | Brightness, sharpness, saturation, contrast, white balance, anti-flicker, low-light compensation adjustable |              |                 |
|                     | Signal-to-Noise Ratio   | >50dB   |              |                 |
| Pan-Tilt Parameters | Pan Rotation            | -170° ~ +170°   |              |                 |
|                     | Tilt Rotation           | -30° ~ +90°   |              |                 |
|                     | Pan Control Speed       | 0.1°/s ~ 60°/s  |              |                 |
|                     | Tilt Control Speed      | 0.1°/s ~ 30°/s  |              |                 |
|                     | Preset Speed            | Pan: 60°/s, Tilt: 30°/s   |              |                 |
|                     | Number of Presets       | Users can set up to 255 preset positions (10 via remote control)  |              |                 |
| Other Parameters    | Power adapter           | Input: AC110V-AC220V<br>Output: DC12V/2.5A  |              |                 |
|                     | Input voltage           | DC12V±10%   |              |                 |
|                     | Input current           | 1.5A (Max)  |              |                 |
|                     | Power consumption       | 18W (Max)   |              |                 |
|                     | Storage temperature     | -10°C ~ +60°C   |              |                 |
|                     | Storage humidity        | 20% ~ 95%   |              |                 |
|                     | Operating temperature   | -10°C ~ +50°C   |              |                 |
|                     | Operating humidity      | 20% ~ 80%   |              |                 |
|                     | Dimensions              | 167×152×210 mm (6.6×6.0×8.3 in)   |              |                 |
|                     | Net weight              | 1.9kg (4.2lb)   |              |                 |
|                     | Operating environment   | Indoor  |              |                 |
|                     | Remote maintenance      | Firmware upgrade, reboot, reset   |              |                 |
|                     | Optional accessories    | Mounting bracket, control console   |              |                 |

## Product Code

| Product Code  | Item  |
|---------------|---|
| 981-1100-07-0 | RGB12X-UPAI-OL 4K60 12X POE Tracking Camera     |
| 981-1100-08-0 | RGB12X-UNAI-OL 4K60 12X POE NDI Tracking Camera |
| 981-1100-09-0 | RGB20X-UPAI-OL 4K60 20X POE Tracking Camera     |
| 981-1100-10-0 | RGB20X-UNAI-OL 4K60 20X POE NDI Tracking Camera |
| 981-1100-11-0 | RGB30X-UPAI-OL 4K60 30X POE Tracking Camera     |
| 981-1100-12-0 | RGB30X-UNAI-OL 4K60 30X POE NDI Tracking Camera |

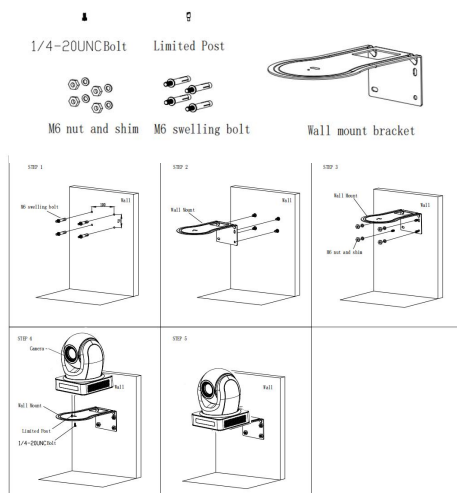
## Dimension



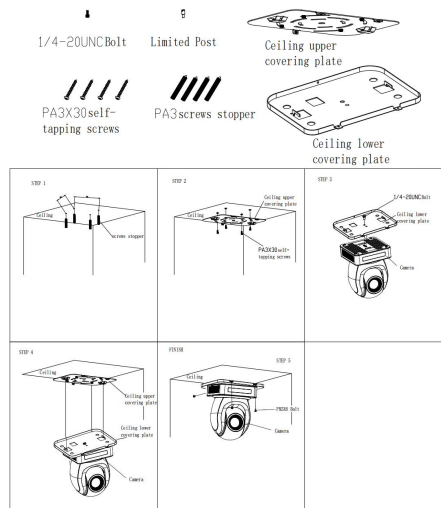
unit: mm

## Installation

### Wall Mount



### Ceiling Mount



**Note: the accessories are not included in the package.**

Tel: +86-592-5771197 | Fax: +86-592-5788216 | E-mail: sales@rgbblink.com

Headquarter: 6th Floor, No. 37-3 Banshang community, Building 3, Xinke Plaza, Torch Hi-Tech Industrial Development Zone, Xiamen, China

Specifications are correct at time of printing and subject to change or alteration without notice.

