

AxC-ES100 overview

Just as every AxC card within the Audio ToolBox range, the AxC-ES100 can equally be used in AVBx3 or AVBx7 platforms.

Using one slot of either ToolBox, the AxC-ES100 allows you to bring both EtherSound and ASIO interfaces into your network configuration.



Key features

- Using only one Audio ToolBox slot, the AxC-ES100 can be used either with AVBx3 or AVBx7 platforms
- 64 inputs and 64 outputs
- One RS232 port compatible with Yamaha HA remote
- ASIO through the third port (up to 64 channels in and 64 channels out)
- Remote management with AVS-Monitor software
- Two EtherCon connectors allowing 64 channels extraction and 64 channels insertion to ES100 network

Audio ToolBox Platform overview

Smart, expandable and sustainable: meet AuviTran's versatile and flexible platforms bringing convergence among network technologies and audio interfaces.

With two 19" rack chassis AVBx3 and AVBx7 both available in StageBox or Installation modes, plus 14 interface cards, build the configuration you need.

AVBx3 as Installation mode



AVBx7 as StageBox mode



Mechanical Specifications

200 x 100 x 40 mm: AuviTran Audio ToolBox platform AxC card format

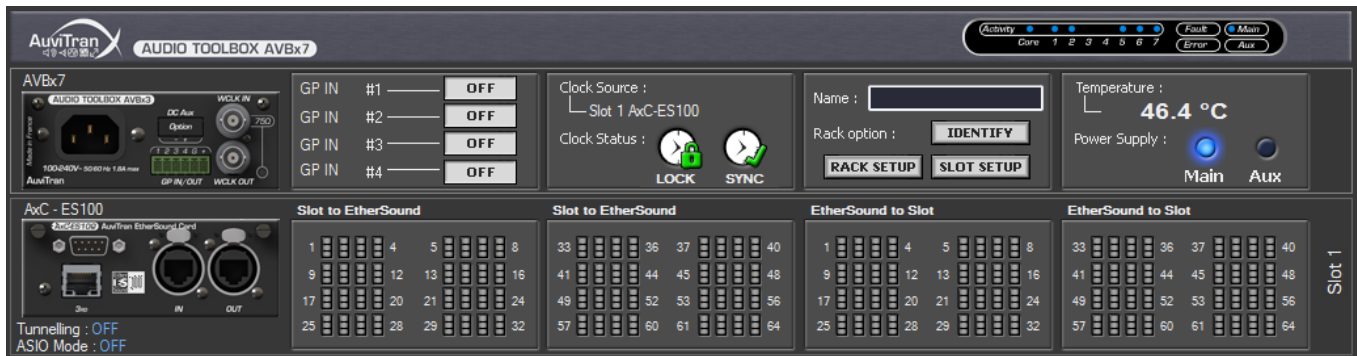
AxC-ES100 Applications



Combined with other AuviTran Audio ToolBox cards, the AxC-ES100 card opens exciting possibilities to the professional audio systems:

- Coupled with AxC-AX4M mic card and AxC-AX40 analog output card, AxC-ES100 tunnelling system allows setting and monitoring all ToolBox parameters, such as microphone gains, using AVS-Monitor interface or a Yamaha mixer HA remote control.
- Suitable for all public address applications, live sound and adapted to Yamaha consoles.

AVS-Monitor Software control page



Technical Specifications

AxC-ES100: EtherSound card for the AuviTran Audio ToolBox platform

Size	200 mm x 100 mm x 40 mm –AuviTran Audio ToolBox platform cards format
Power Supply	+12V / +3.3V - Through AuviTran Audio ToolBox backplane
Storage: Temp/Humidity	- 5°C to 70°C / 0% to 95% (non-condensing)
Operating: Temp/Humidity	0 °C to 50°C / 5% to 90% (non-condensing)
Connectors	2 x Neutrik EtherCon RJ45-XLR female connectors (EtherSound ES100 from/to links), 1 x RJ45 connector for third port (PC control and ASIO Streamer interface), 1 x Sub-D9 (RS232) serial interface
Audio Outputs	64 channels extracted from any of the 64 EtherSound downstream channels or from any of the 64 EtherSound upstream channels in bidirectional mode @ 44.1 kHz or 48kHz
Audio inputs	64 channels inserted from any of the 64 EtherSound downstream channels or from any of the 64 EtherSound upstream channels in bidirectional mode @ 44.1 kHz or 48kHz
Sample format	24 bit
Sample rate	44.1 kHz, 48kHz, 88,2 kHz, and 96 kHz
Synchronization	Automatic from EtherSound network

ASIO

I/O count	Up to 64 ASIO inputs and 64 ASIO outputs from/to EtherSound
Sample format	24 bit
Sample rate	44.1 kHz, 48kHz, 88,2 kHz, and 96 kHz

Host PC minimum specifications

Operating system	Windows 8/Seven/Vista/XP for 32 or 64 bit versions (XP not recommended for ASIO due to its poor NDIS priority management)
Processor / Memory	Dual core CPU, clock speed > 2GHz + At least 2 GB for Windows 8, 7 or Vista
Network	100Mbps full duplex Ethernet adapter with latest NDIS driver (Performances of the ASIO driver are directly related to NIC driver)
Storage	7200rpm disk or better for ASIO

Control and monitoring Environment

AVS-Monitor	AVS-Monitor enables to remotely set, control and monitor an EtherSound network and provides enhanced control pages to manage the specific parameters of cards inserted in the different slots
-------------	---

Part number

AxC-ES100 EtherSound ES100 card for AuviTran Audio ToolBox